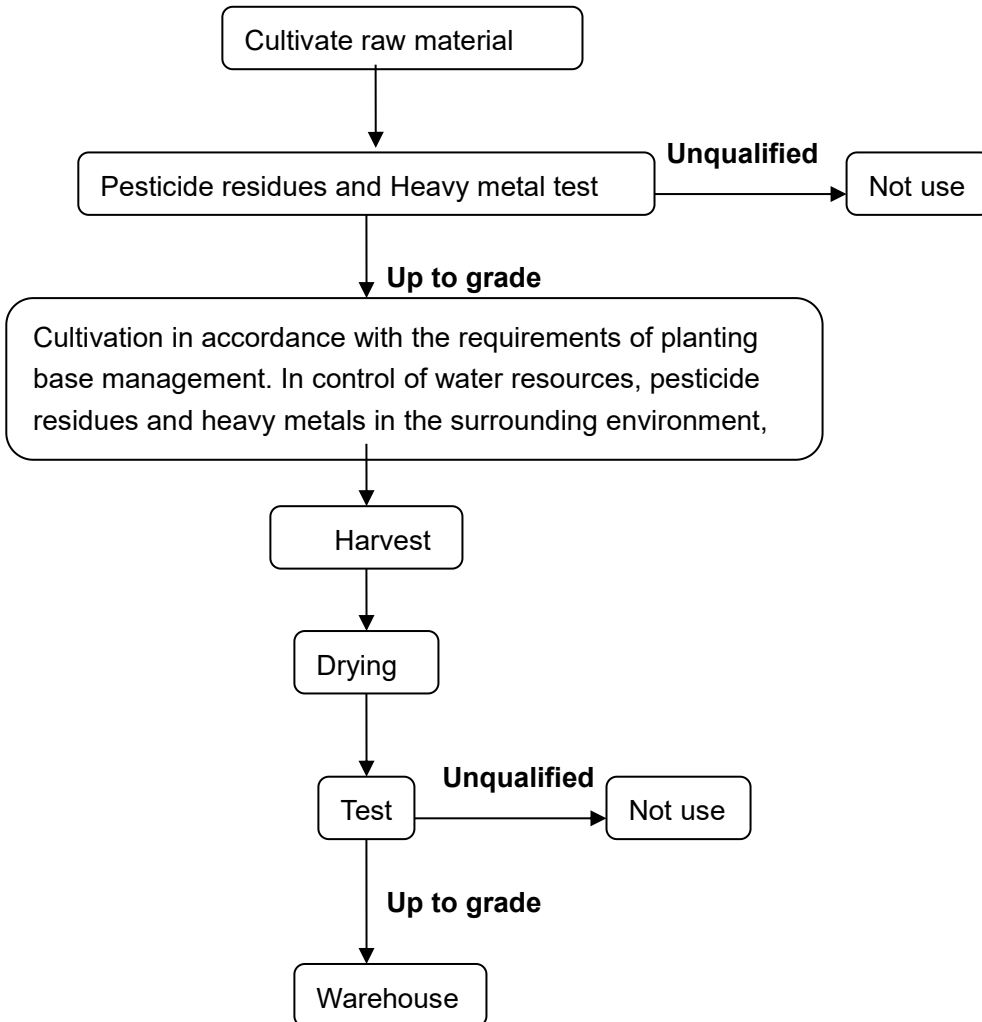
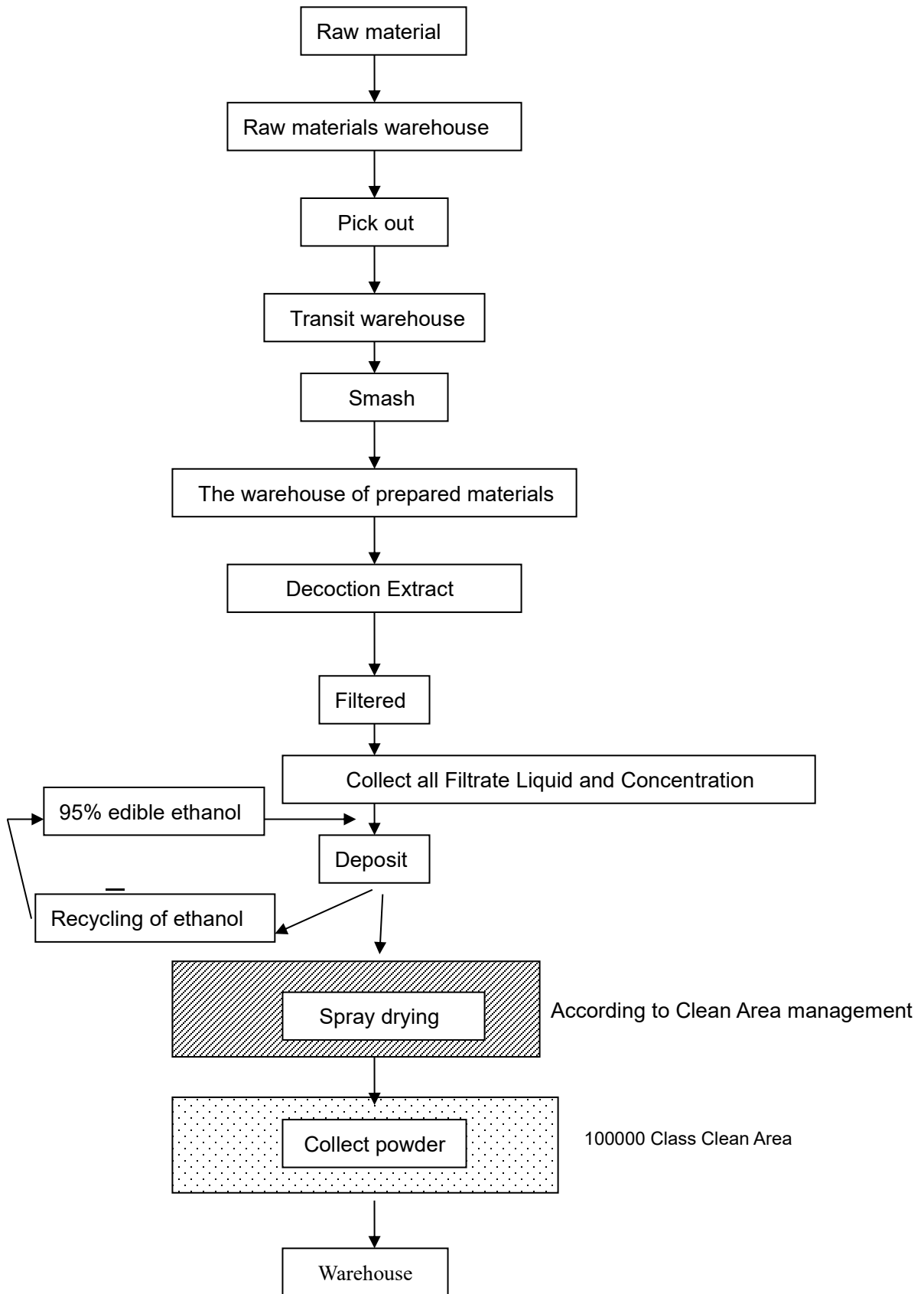


Flow Chart of Cordyceps Mycelium Extract (Cordycepic acid 7%)





Raw material

Raw materials come from planting base,In control of Moisture,Ash,Heavy metal, Pesticide residues and polysaccharide content.

Pick out

Throw off which smaller and bad color and wipe off the leftover of culture medium in foot of the mushroom

Smash

Smash and Sieved

Decoction Extract

Smash raw materials and Decoction Extract using purified water twice

Filtered

Make Filtrate Liquid separate from indiscerptible matter

Concentration

Vacuum and low temperature,the temperature degree down 75℃

Deposit

Edible ethanol , Mix round equably, Separate impurity and Collect Deposit

Spray drying

Add purified water to deposit, dissolve at 90℃ then spray drying